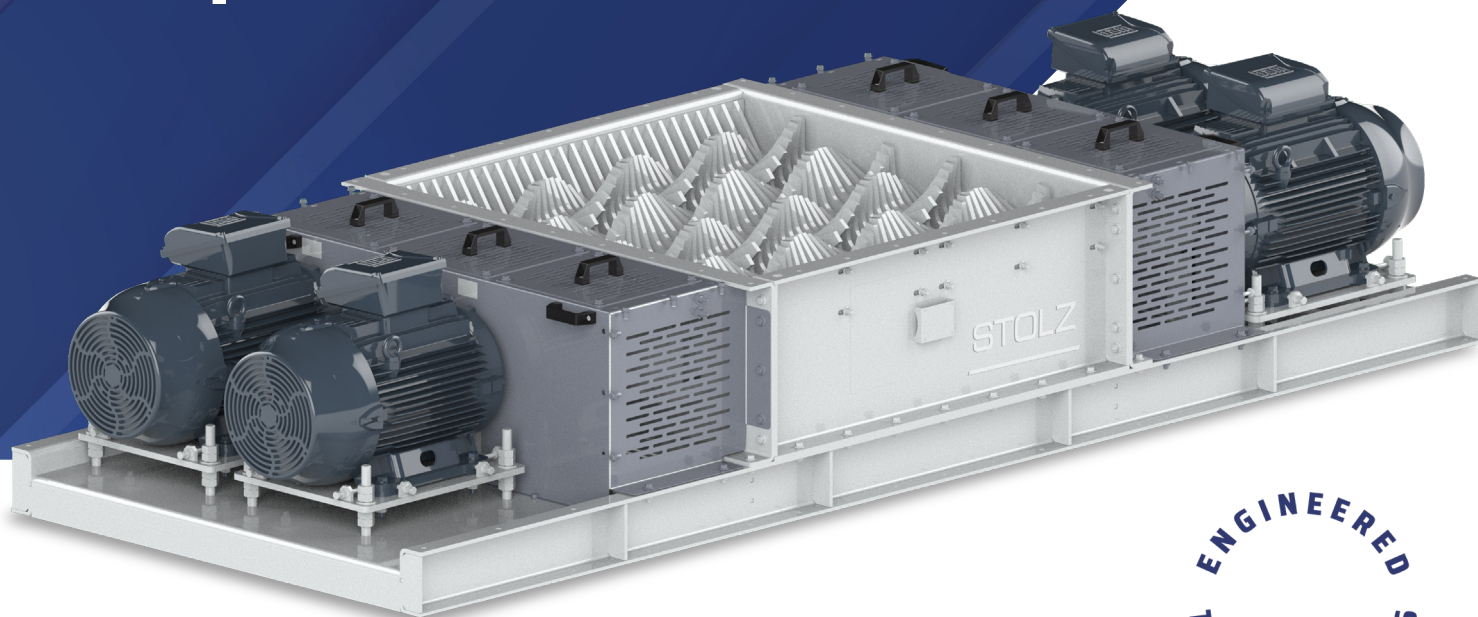


STOLZ

Lump breaker



ENGINEERED
TO YOUR NEEDS

The Lump breaker can be installed at all product inlets (in bulk or in bags) when the particle size of a product required to be powered.

The crusher can be assembled in a circuit under a discharging hopper or a bag unloader but it is not designed to turn a non friable raw material into powder.

FEATURES

The lump breaker includes one or two rotors depending on the required capacity.

It has two versions, coarse or fine, according to the required particle size.

OPTIONS

- Rotation sensor
- Temperature probes on bearings

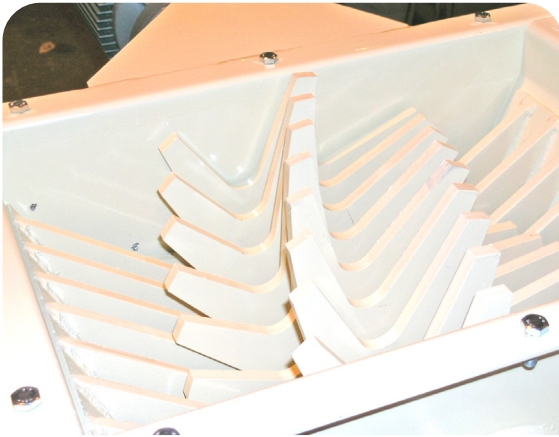
THE ROTOR

It consists of a steel shaft fitted with cross braced disks supporting special steel disks. These offset disks have teeth with inclined geometry forcing the product flow between each interval.

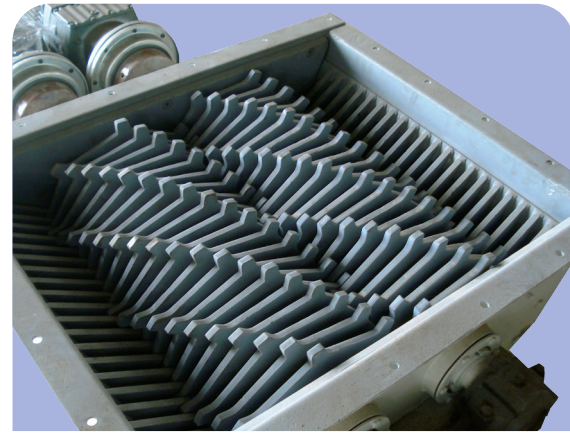
The disks are separated from one another by guides assembled on shaft.

The rotor turns on flanged bearings with self-aligning roller bearing mounted outside on supporting frame and are separated from the machine sides.

Their lubrication is ensured by manual greasing devices, and direct drive by hollow shaft gear motor.



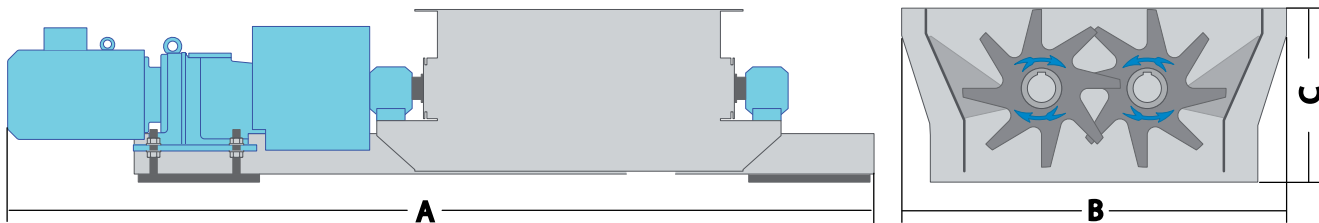
Single rotor lump breaker



Double rotor lump breaker with toothed discs, optimized for cassava

DESMET STOLZ FRANCE SAS / Photos et schémas non contractuels / Non contractual drawings and pictures

DIMENSIONS AND POWER BY TYPE



Type	Quantity of rotors	Power	Mass	Dimensions (mm)		
		(kW)	(kg)	A	B	C
BMG1	1	1x2,2	230	1210	660	400
BMF1	1	1x2,2	240	1210	660	400
BMG2	2	2x5,5	920	2150	960	430
BMF2	2	2x11	1035	2150	960	430
BM4R	4	4x22	1500	3550	1370	700

Drawing : lump breaker with double row of toothed discs

STOLZ

82 Route de Boisjean • 62170 • Wailly Beaucamp • France

Tél : +33 (0)3 21 90 05 05 • contact.stolz@desmet.com

www.desmet.com/stolz

 /Stolz